



SSYKU TECH

SMART GAS ALARM




SS YKU TECH

www.ssykutech.in



APPLICATION

Powered by  IOT
TECHNOLOGY
INCORPORATED

Smart Gas Alarm, actively monitors your gas on highly visible 7" TFT LCD Touch Screen. It comes with Wi-Fi communication, Alarm conditions can be viewed on Desktop or Tablet , Smart phone. Alerts can be sent via Email, SMS ,Telephone call to the maintenance engineer or Operator for proactive monitoring. Historical alerts can be downloaded for analysis

FEATURES



- ❖ IOT enabled - Data will be sent to cloud for live monitoring and reporting purpose
 - ❖ Report will be generated for hourly, daily, weekly, monthly, yearly and custom date range
- ❖ 7 inch Touch Screen Display with Password protected interface
- ❖ Microprocessor based digital LCD and individual microprocessor on each sensor module
- ❖ The Sensor Module is the smallest computer-calibrated temperature-compensated sensor in the industry
- ❖ PSI, mmHg or BAR display (programmable)
- ❖ Dry contact is built in for remote monitoring of the LCD alarm
- ❖ Field programmable push buttons for adjustment of “HI” and “LOW” set-points
- ❖ Smart Alarm available in 1 to 6 gases
- ❖ Wi-Fi connectivity
- ❖ Monitor gas pressure- low & high set points, real-time alerting for any abnormalities
- ❖ Transmit data wirelessly from the device to cloud for remote monitor
- ❖ Data from each device can be monitored remotely using computer & phone
- ❖ Maintenance team will automatically receive phone call during any abnormalities
- ❖ Temperature and humidity sensors enabled
- ❖ Complaint with HTM 02-01 and NFPA 99

TECHNICAL DATA

Measurement Range

- HONEY WELL 0 To 10 Bar,0 To 150 Psi POSITIVE PRESSURE SENSORS
- HONEY WELL 0 To 15 Psi Vacuum NEGATIVE PRESSURE SENSORS
- Industry-Leading Accuracy Of ± 0.25 %FSS BFSL Response Time
- Calibrated Over Temperature Range Of 0°C To 50°C [32°F To 122°F]
- Power Consumption: 2 Ua Typical When Utilizing
- Meet IPC/JEDEC J-STD-020D.1 Moisture Sensitivity Level 1 Requirements
- Miniature 10 Mm X 10 Mm [0.39 In X 0.39 In] Package
- Sensing Medium Type dry gas only

Processor and Operating System

- Arm Cortex M3 32 Bit
- Operating Frequency 72 Mhz
- Operating Voltage 3.3v
- RTOS VER SL-01

Display

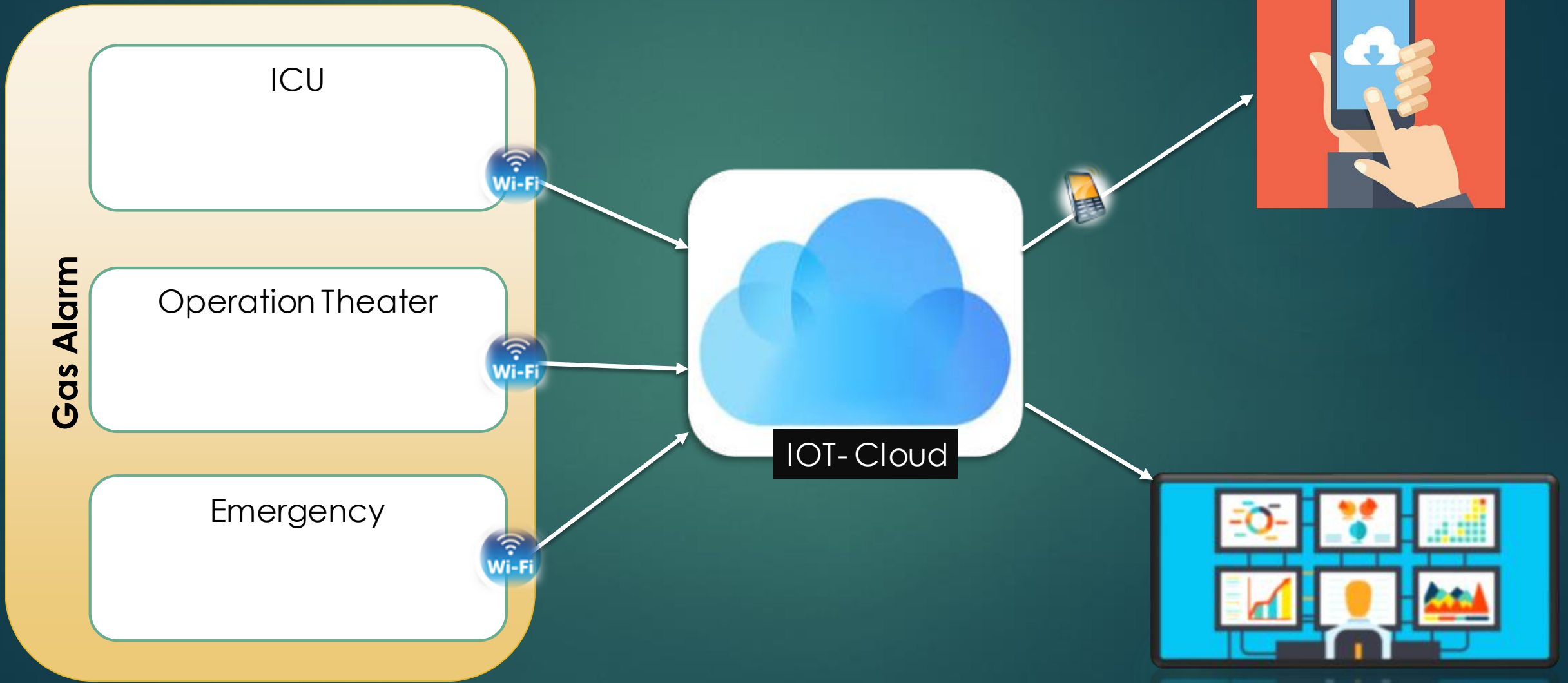
- Color 64k 65536 16 Bit 565 Format
- Layout Size 181(L)*108(W)*7.3(H)
- Active Area (A.A) 164.9mm (L)*100mm (W)
- Visual Area (V.A) 154.08mm (L)*85.92mm (W)
- Resolution 800*480 Pixel
- Touch Type Resistive
- Operating Voltage 5v
- Operating Current 250 Ma
- Working Temperature 5v, Humidity 60% min -20 Degree Typical 25 Degree Max 70 Degree
- Storage Temperature -30 Degree Typical 25 Degree Max 85 Degree
- Working Humidity Min 10% Typical 60% Max 90%

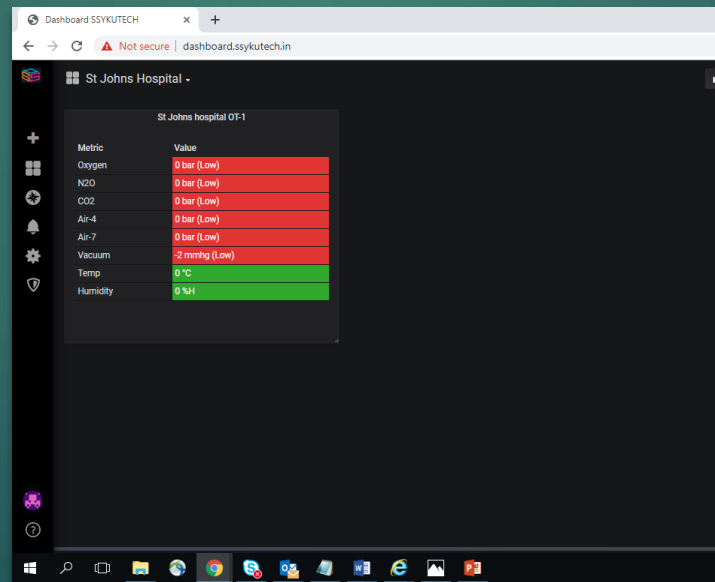
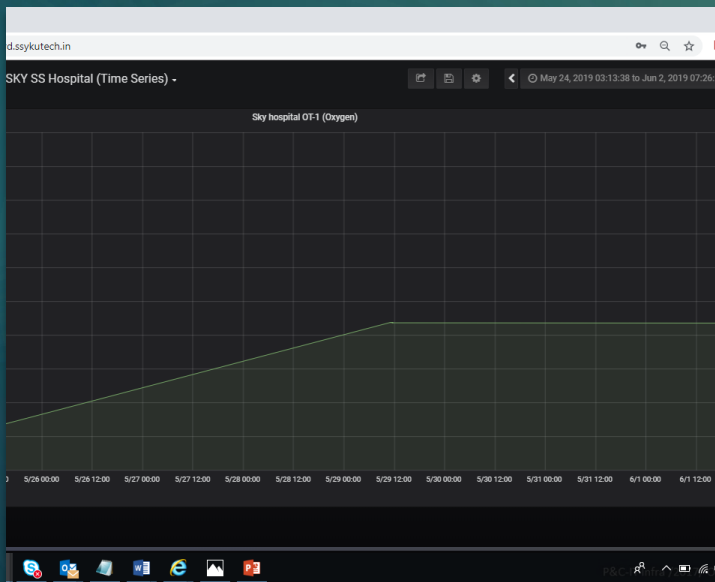
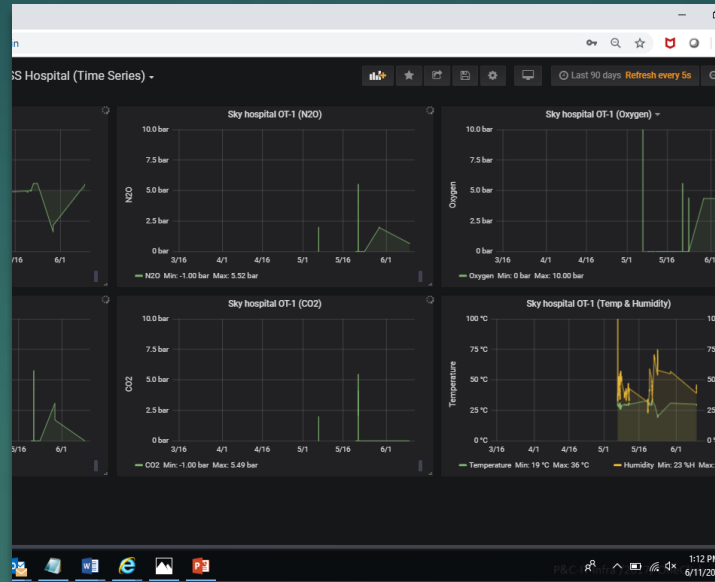
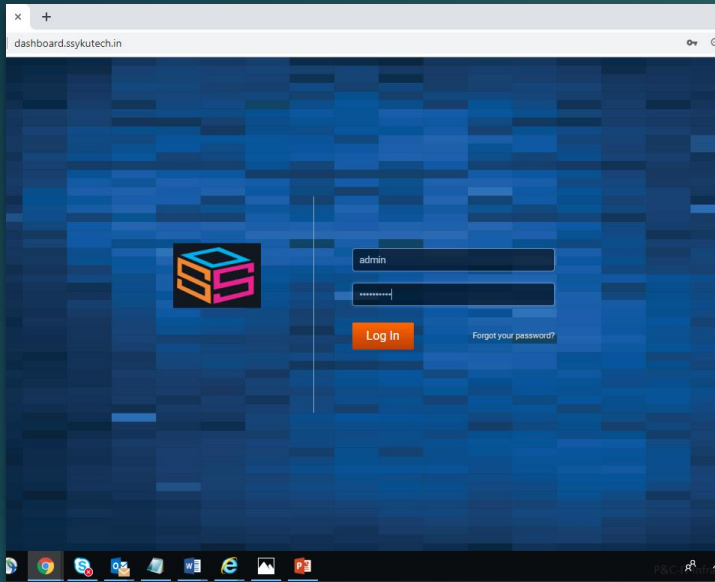
Electrical output/input

- Meet UL, CE requirements,
- All voltage input (AC: 90 ~ 264V)
- Low ripple and low noise
- Output overload and short circuit protection
- High efficiency, high power density
- The product is designed to meet the requirements of EMC and Safety Test
- Low power consumption, environmental protection, no-load loss $< 0.1\text{W}$
- Operation Temperature: -20 — $+60^{\circ}\text{C}$
- Store Temperature: -40 — $+80^{\circ}\text{C}$
- Relative humidity: 5—95%
- Rated input voltage: 100-240VAc

Remote Monitoring

Hospital





Dashboard and Reporting



SS YKU TECH

www.ssykutech.in

Sri Sivam YKU Tech Pvt Ltd
No.14/20, Arumugam street, 1st Floor,
Puzhuthivakkam, Madipakkam,
Chennai -600091
Ph no.044 48549300
Gst No.33ABBCS8948Q1ZI
Contact us at sales@ssykutech.in
www.ssykutech.in